





IRELAND IS STRUGGLING

- 81% of small firms affected
- 20% don't change passwords
- 3rd most common crime against business

STILL A PROBLEM





Ooops, your files have been encrypted!

English

What Happened to My Computer?

Your important files are encrypted.

Many of your documents, photos, videos, databases and other files are no longer accessible because they have been encrypted. Maybe you are busy looking for a way to recover your files, but do not waste your time. Nobody can recover your files without our decryption service.

Can I Recover My Files?

Sure. We guarantee that you can recover all your files safely and easily. But you have not so enough time.

You can decrypt some of your files for free. Try now by clicking <Decrypt>.

But if you want to decrypt all your files, you need to pay.

You only have 3 days to submit the payment. After that the price will be doubled.

Also, if you don't pay in 7 days, you won't be able to recover your files forever.

We will have free events for users who are so poor that they couldn't pay in 6 months.

How Do I Pay?

Payment is accepted in Bitcoin only. For more information, click <About bitcoin>.

Please check the current price of Bitcoin and buy some bitcoins. For more information, click <How to buy bitcoins>.

And send the correct amount to the address specified in this window.

After your payment, click <Check Payment>. Best time to check: 9:00am - 11:00am

CMT from Monday to Friday

Payment will be raised on

5/16/2017 00:47:55

Time Left

02:23:57:37

Your files will be lost on

5/20/2017 00:47:55

Time Left

06:23:57:37

[About bitcoin](#)

[How to buy bitcoins?](#)

[Contact Us](#)

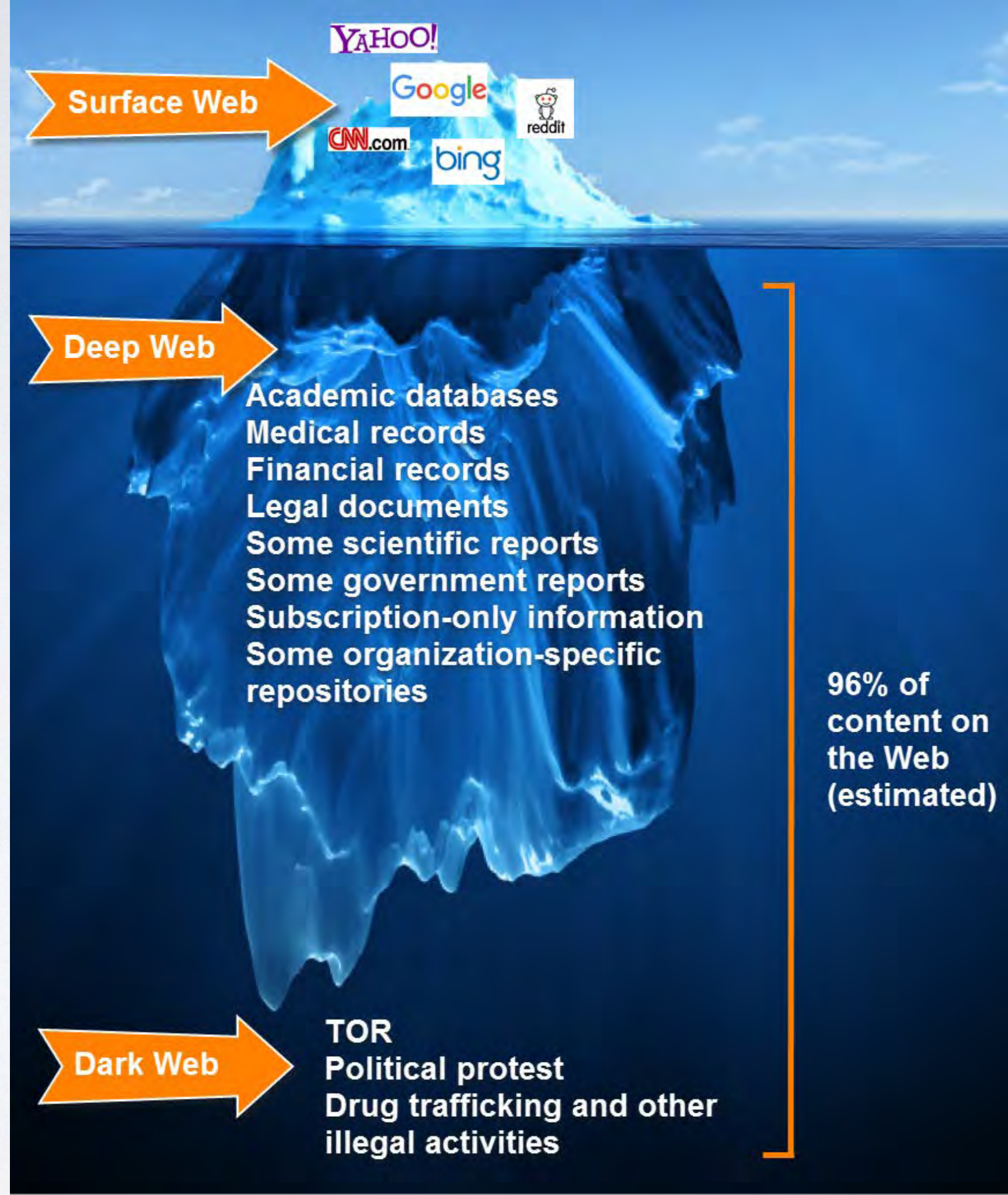


Send \$300 worth of bitcoin to this address:

12t9YDPgwueZ9NyMgw519p7AA8isjr6SMw

Copy

THE DARK WEB



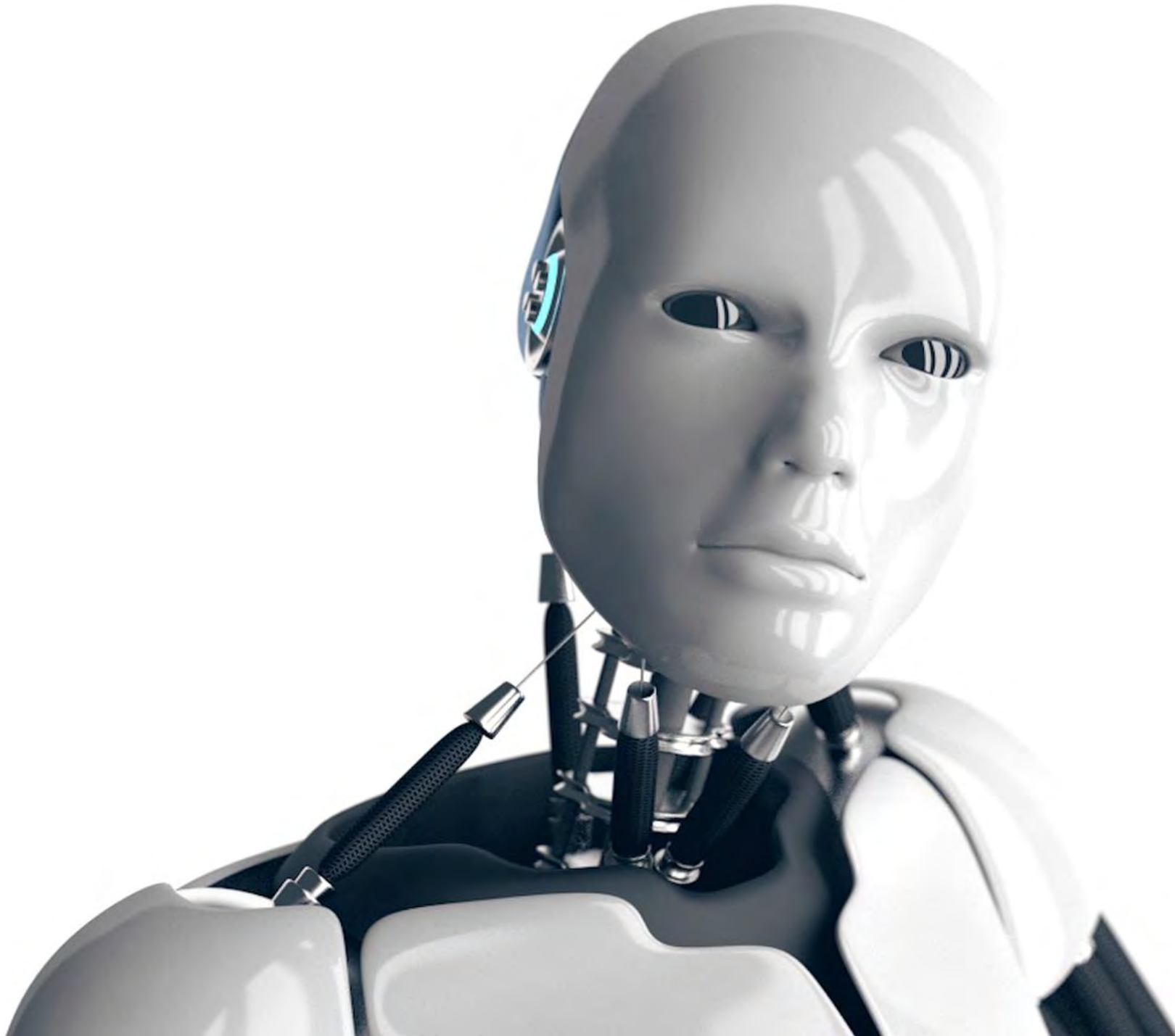
THE RISE OF BITCOIN



Title



RISE OF THE ROBOTS







GDPR

PAPERLESS OFFICE













SanDisk
Ultra

400GB
UHS-I
A1

microSDXC



TECH IS
PUSHING
RENTS UP



What if you could connect
everyday things?













February Home Report

Willow Park Grove



Welcome to your February Home Report.
See what's happened in your Nest home this month.

Leap back before you spring forward.

Let's see how the average Nest home did in 2015.

219

Leafs earned

1.472

hours away
from home

751

hours of heating

1/200

homes had a CO
Heads-Up alert

2/5

homes had a
smoke
Heads-Up alert

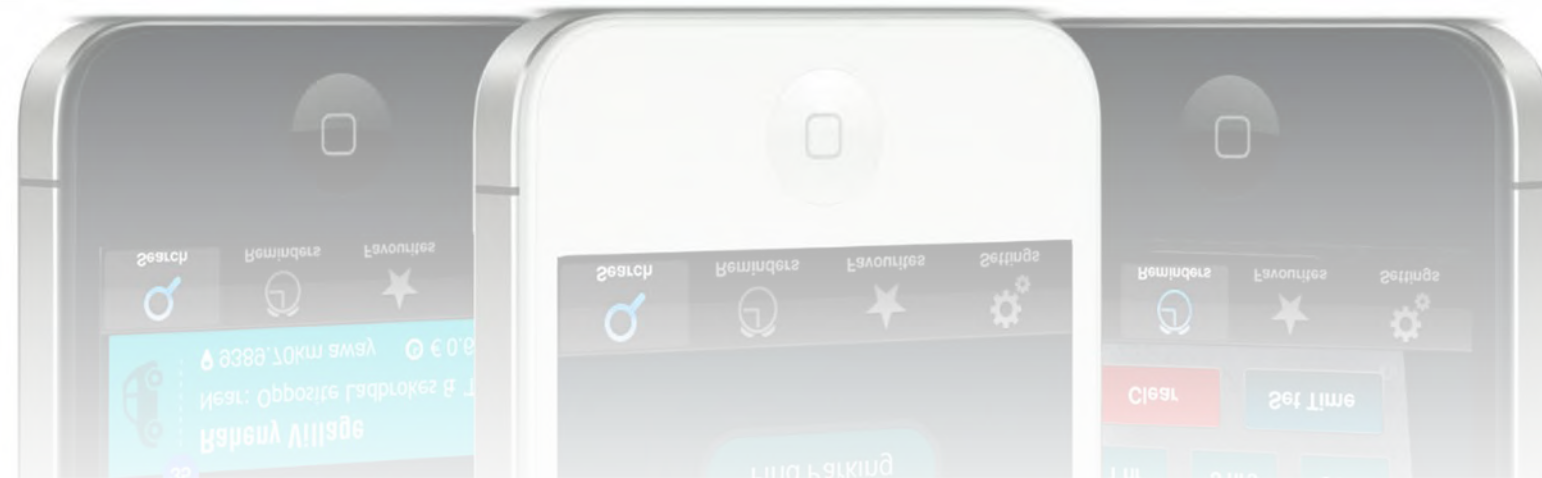
Energy summary as of 29 February

We're looking at info from your Nest Thermostat: Family Room.

SONOS







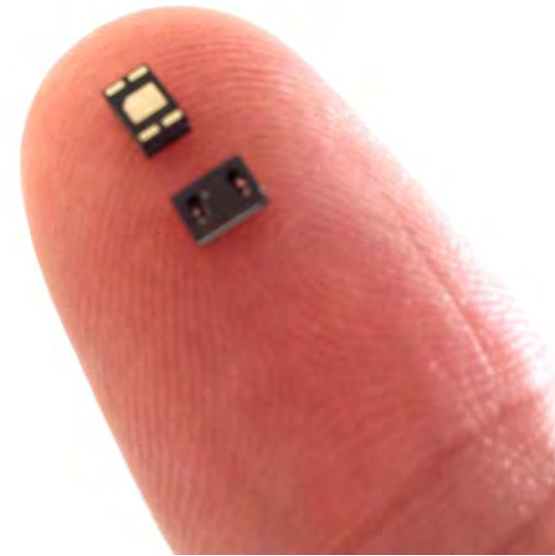




Telematics



Sensors



Big, getting bigger

- Gartner: 30 billion devices on the Internet of Things by 2020
- 4 devices for every human on the planet

IoT in agriculture





- 38 delivery vehicles
- Can view location of all vehicles in real time online
- Can view speed, mileage, start-up, shut-down
- Hours Worked Report - eliminate payroll discrepancies
- Measures fuel consumption fleet-wide
- Drivers have modified their driving behaviour --> reduced number of speeding tickets.


[DASHBOARD](#)
[REPORTS](#)
[LIVE FLEET](#)
[ROUTE REPLAY](#)
[ALERTS](#)
[FLEET SERVICE](#)
[ADMIN](#)
[Dashboard](#)
[Vehicle Details](#) | Please Select ▼

 Print Single

 Print all

[Fleet Details](#)

Vehicle Groups All Vehicles Groups ▼

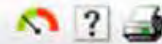
Show Top 10 ▼

From Last 24 Hrs ▼



All

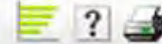
Engine On/Off →



Van 26	6 h 0 m	6 h 21 m	11 h 39 m
Van 27	6 h 0 m	5 h 30 m	12 h 30 m
Van 30	6 h 0 m		12 h 56 m
Van 28	6 h 0 m		14 h 14 m
Van 31	6 h 0 m		14 h 33 m
Van 32	6 h 0 m		15 h 51 m
3059	6 h 0 m		16 h 29 m
Van 29	6 h 0 m		17 h 10 m
3054	6 h 0 m		17 h 45 m
3056	5 h 47 m		18 h 13 m

 Trending

Distance Travelled →



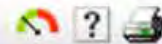
220 M Acceptable



The Total Distance Travelled is 3506 M

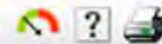
 Trending

Vehicle Idling →



Van 30	5 h 7 m
Van 27	5 h 4 m
3059	4 h 56 m
Van 26	4 h 40 m
Van 28	3 h 56 m
Van 31	3 h 14 m
3054	2 h 49 m
Van 32	2 h 43 m
3056	1 h 24 m
3051	1 h 10 m

High Speed →



3051	49
Van 30	31
Van 29	26
3059	24
Van 31	19
3050	19
3054	18
Van 26	14
3056	14
Van 28	10



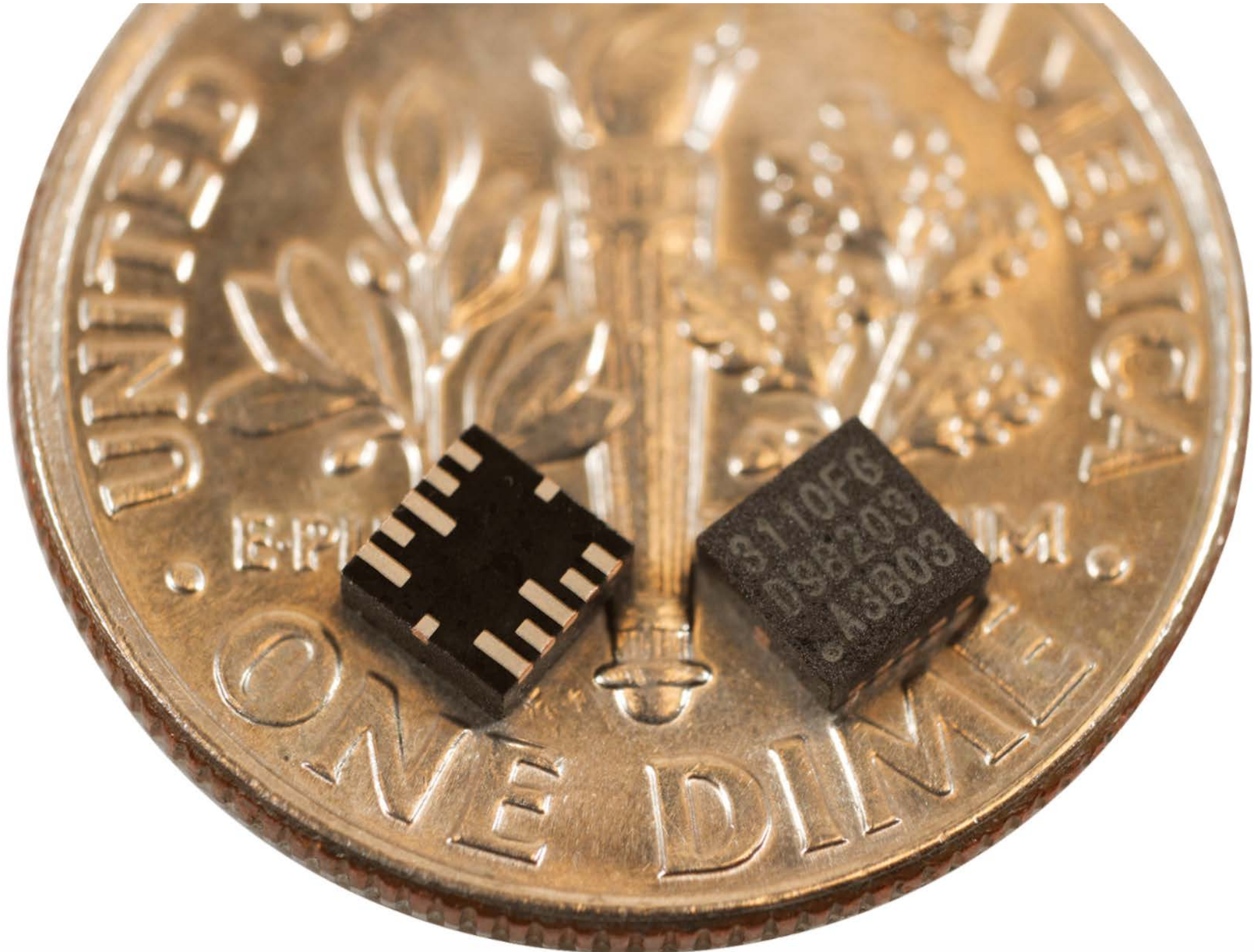
- 6,000-strong Irish fleet in peak season
- Telemetry black box with M2M sim
- Tracks journeys, reports on how car is driven, monitors driving conditions
- Keeps repair costs to a minimum
- Reduction in insurance claims and fraud
- Improved incident management and customer service
- Location based services





- Dialog sensor for epilepsy: a wearable sensor that can detect seizures and alert family members. Can also log daily data points like mood and medication.
- E-ink screen and sensors, designed to be worn directly on the skin like a sticker.
- Communicates with a smartphone app and a cloud-based tool aggregates data for patients and doctors.

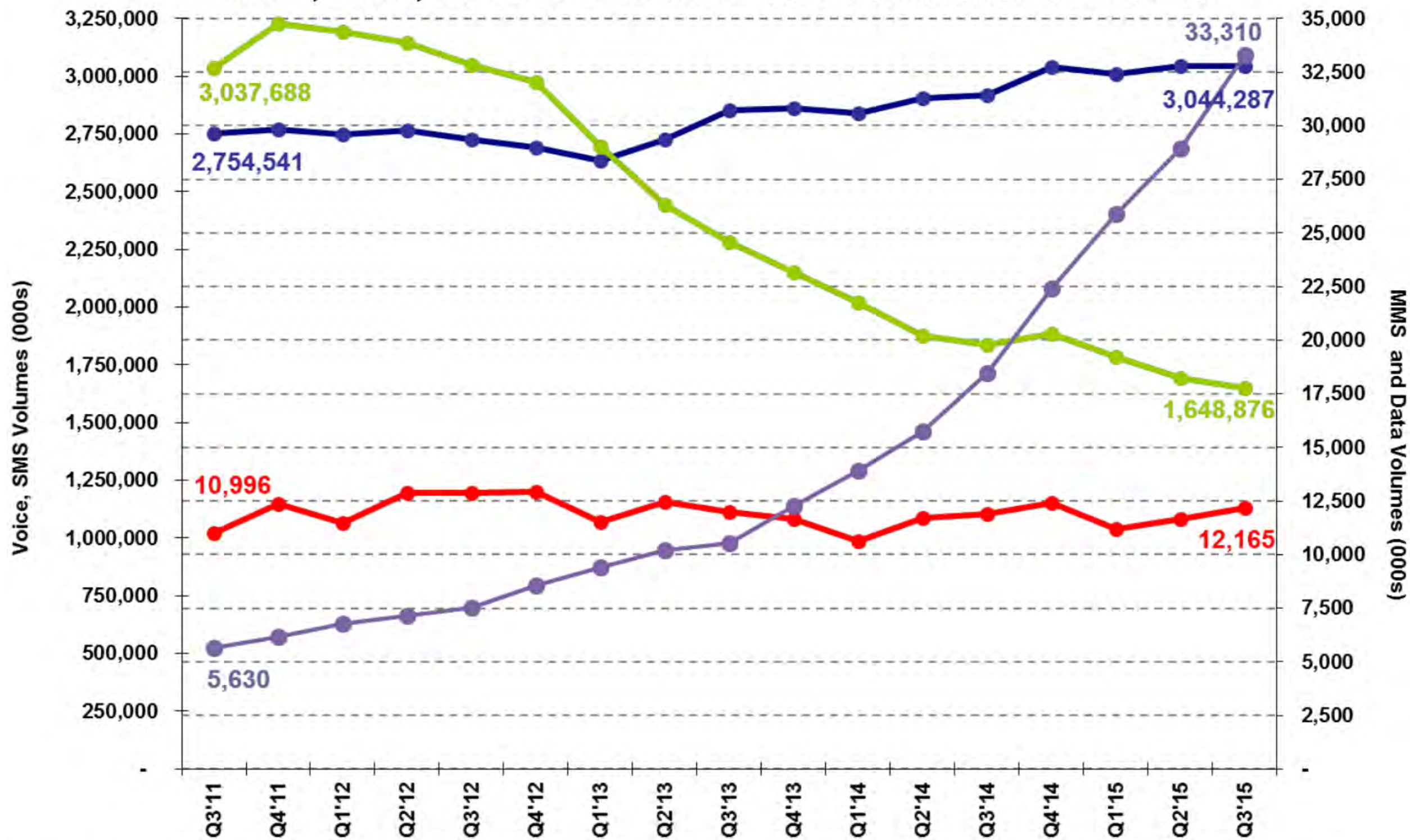
Teeny, tiny chips



4G and 5G

- Rollout plans ongoing
- National Broadband Plan

Voice, SMS, MMS and Other Data Volumes Q3'11 - Q3'15



Source: Quarterly Key Data Questionnaire

● Minutes (000s)
 ● SMS Vols (000s)
 ● MMS Vols (000s)
 ● Other Data Vols (000s GB)

Data privacy

- Tracking staff via wearables may be illegal
- Understanding (and sometimes definition) of personal data is still weak in IoT
- 'Safe Harbour' ramifications still haunt data operations

Dystopia







Sometimes we
look stupid.



Thank you.

E: aweckler@independent.ie. T: @adrianweckler